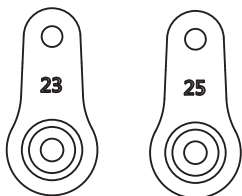
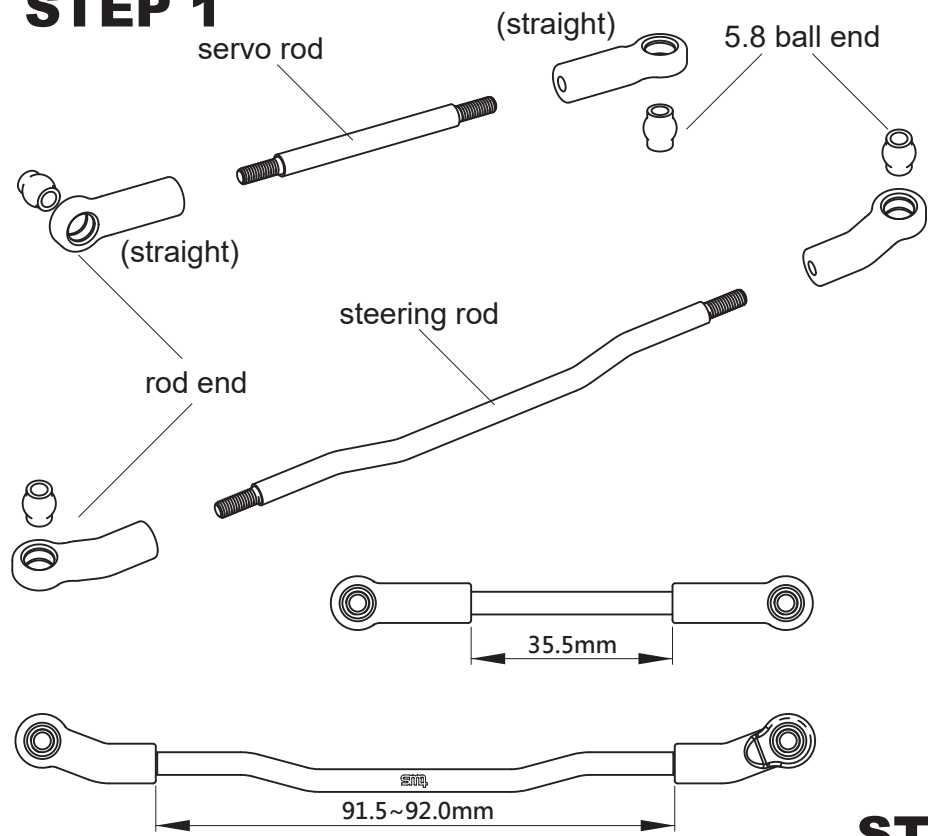
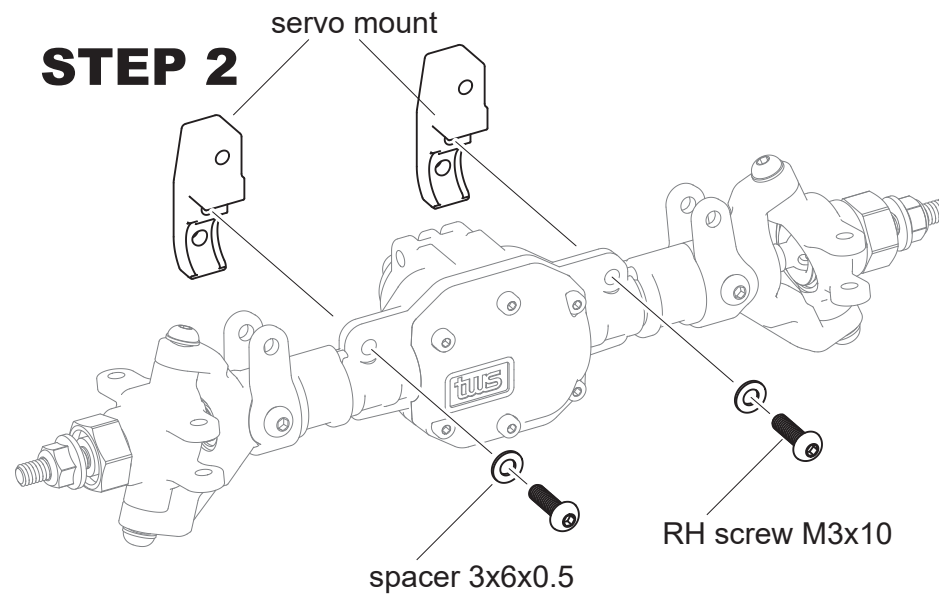


STEP 1

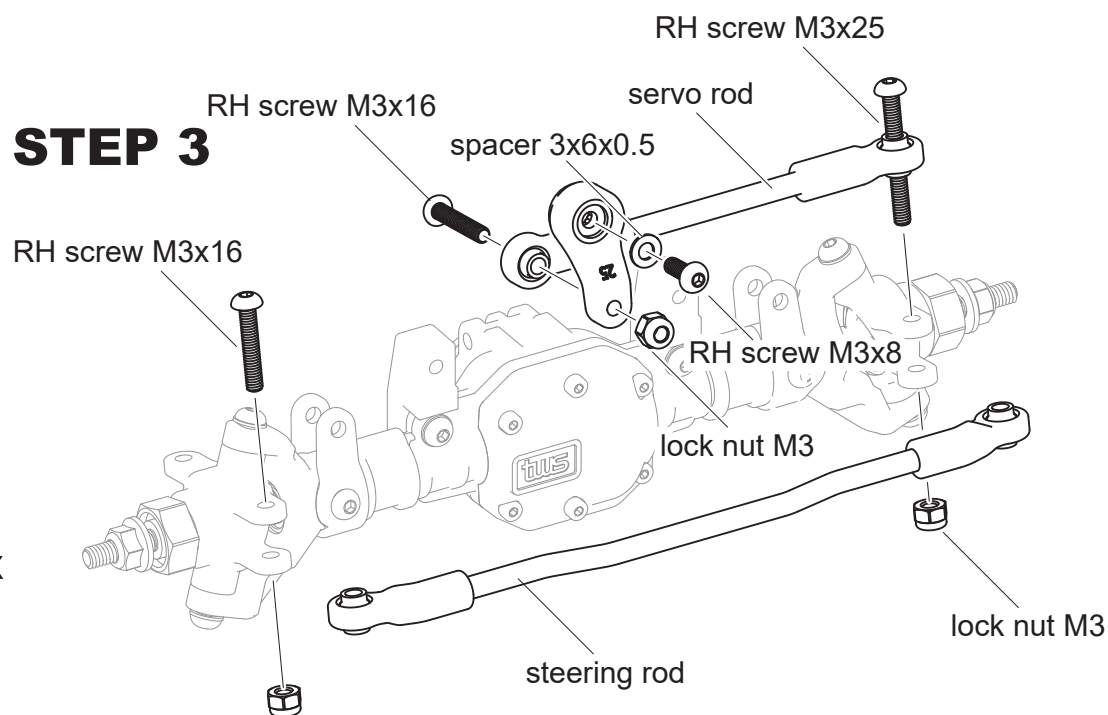


- 23 use for SANWA / KO
- 25 use for FUTABA / SAVOX

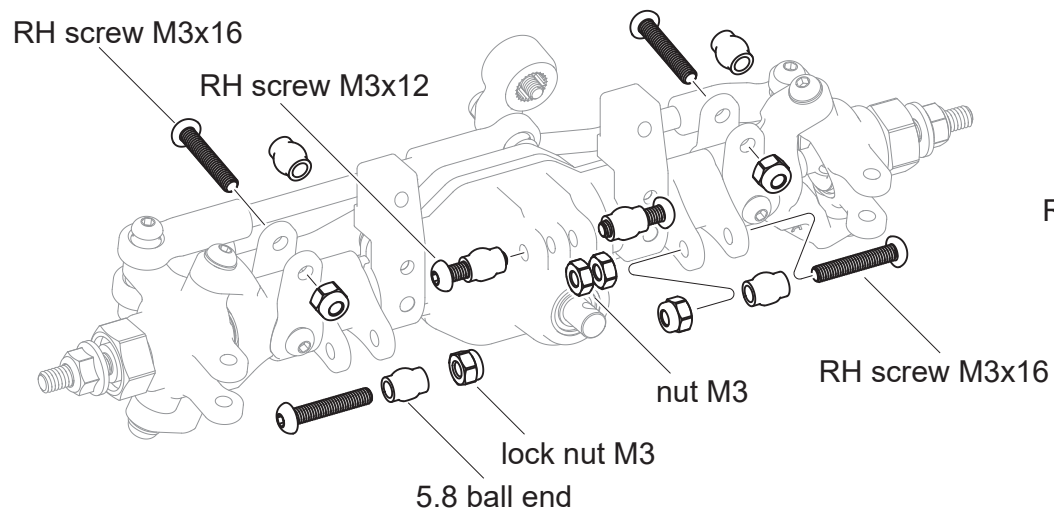
STEP 2



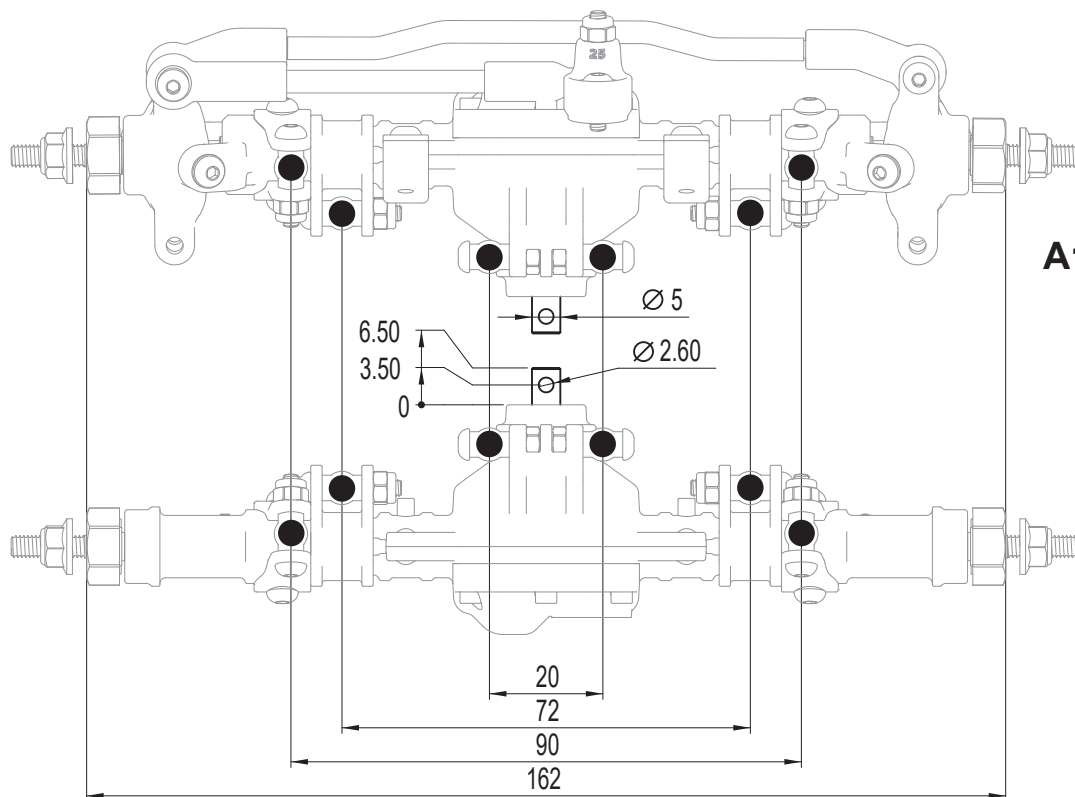
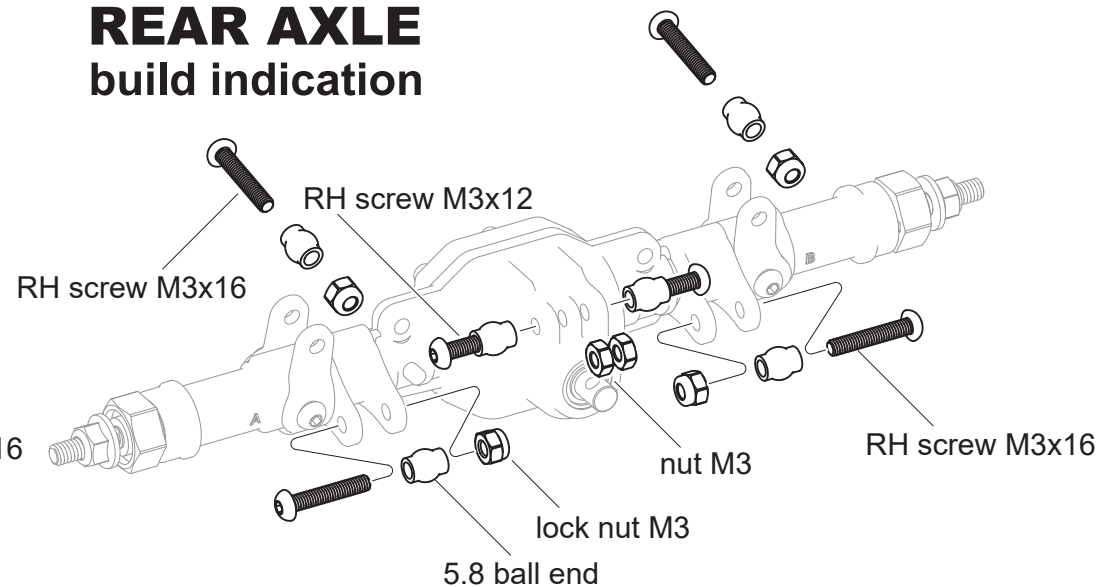
STEP 3



FRONT AXLE build indication



REAR AXLE build indication



A162 BALL-END POSITION INDICATION

PURCHASE SUGGESTION

- 72001400 5.8 Rod end set
- 73000200 5.8 Steel ball end (10)
- 73000800 12mm Brass hex hub 6T (4)
- 73000900 12mm Brass hex hub 8T (4)
- 73001300 Alum. Servo arm 25T